

## AG Gases and Equipment Ltd

Unit 1a, Britannic Works, Broom Street,  
Hanley, Stoke-on-Trent, England, ST1 2ER  
Company No. 10667218

VAT No. 207268317

Founded 13/3/2017

Office: +44(0)1782616611 Fax: +44(0) 1782616610

[tony.addison@agequip.co.uk](mailto:tony.addison@agequip.co.uk)



*Gases & Equipment Ltd*

## SPEC MASTER HPT600 SERIES

### 6.0 Purity Two Stage Nickel Plated Brass Barstock Diaphragm Cylinder Regulator

Spec Master HPT600 series two stage diaphragm cylinder regulators are designed for primary pressure gas control of non-corrosive or toxic, high purity gases up to grade 6.0 purity (99.9999%), on applications where constant delivery pressure is required as the cylinder pressure decreases.

- HPT601 Series | Two Stage Diaphragm Cylinder Regulator, FFKM Pressure Relief Valve, FKM Seal
- HPT602 Series | Two Stage Diaphragm Cylinder Regulator, FFKM Pressure Relief Valve, EPDM Seal

### Specifications

Maximum Inlet Pressure: 300 bar (4350 PSI)

Delivery Pressure Range: 1.5 bar (22 PSI) / 3.5 bar (50 PSI) / 6 bar (90 PSI) / 10 bar (150 PSI)

Gauges: 50mm (2") Diameter

Ports: 1/4" NPT Female

Temperature Range: -20o C to +60o C (-4o F to +140o F)

Flow Coefficient (Cv): 0.079

Helium leak Integrity: 1 x 10<sup>-9</sup> mbar l/s

Weight: 2.0 kg (4.4 lb)\*\*

\* Subject to cylinder connection \*\* Cylinder connection not included



### Materials

Body: Nickel Plated Brass Barstock

Bonnet: Nickel Plated Brass Barstock

Diaphragm: 316L Stainless Steel

Seal: PTFE

Seat: PCTFE

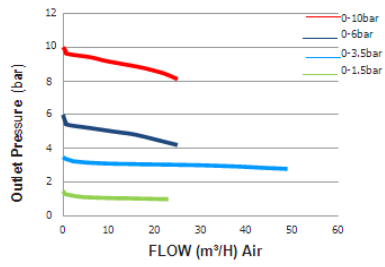
Filter: 10 Micron 316L Stainless Steel

### Features

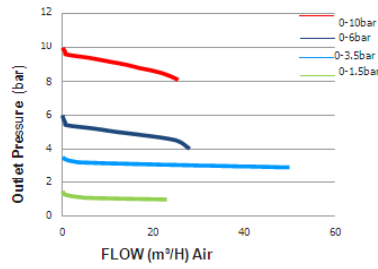
- Six port configuration
- Front panel mounting capabilities
- Encapsulated seat design
- Low wetted surface area
- Full range of inlet and outlet fittings
- Base and side entry

# Flow Performance

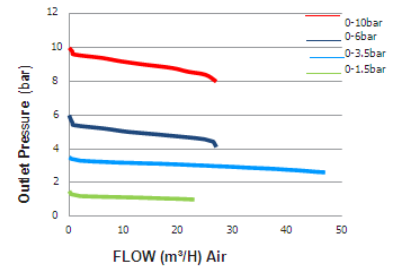
300 bar Inlet Pressure @ 21° C



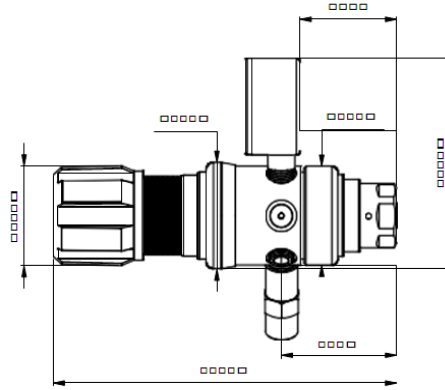
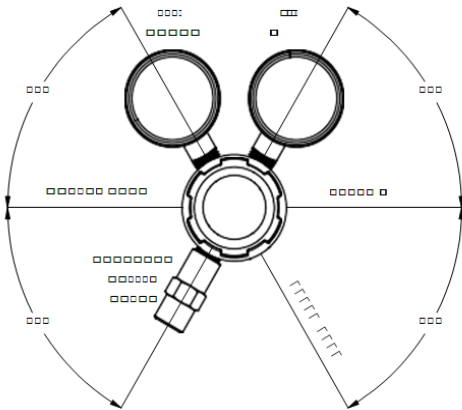
200 bar Inlet Pressure @ 21° C



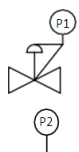
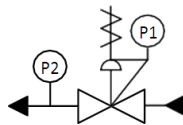
60 bar Inlet Pressure @ 21° C



# Dimensions



# Process & Instrumentation



- Adjustable Pressure Regulator with P1 Pressure Gauge

- P2 Pressure Gauge



- Pressure Relief Valve